



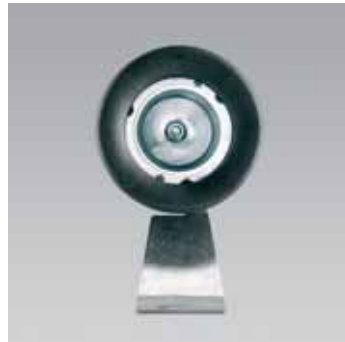
- Small low voltage submersible can be installed to a depth between 0.2 and 5 metres in fresh water only
- The body and ring are made of technopolymer with a safety glass diffuser
- Includes stainless steel bracket, nickel plated brass screws with PG 11 cable gland (Ø6-Ø10mm) and 4 metres of cable
- Recessed box available for floor/wall installation (fig.1)
- The UWF 10 can also be installed above ground using 20W lamps (max.)
- 90° Tilting action
- Remote transformer required
- Can be installed on normally flammable surfaces
- Class 3
- IP 68

Fig. 1





Black

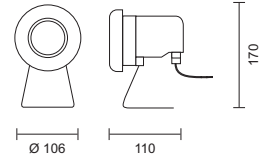


code lamp details

Bipin submersible light

**SB01959018** 100W 12V Gy6.35

Remote transformer required

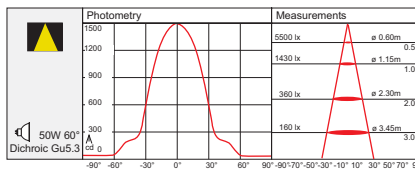
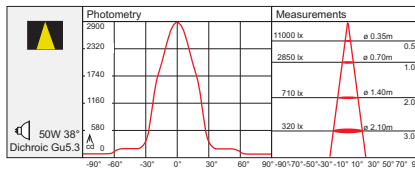
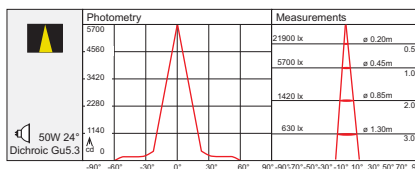
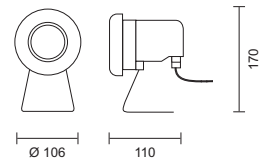
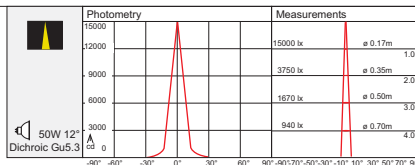


code lamp details

Dichroic submersible light

**SB01958018** 50W 12V Gu5.3

Remote transformer required



**Accessories**



code details  
 Black technopolymer recessing box.  
 For submersible application.

**SB14421018** (167 x Ø190)



code details  
 Wiring box for ground and wall recessed  
 installation. **Not for submersible  
 application.**

**SB14422018**